

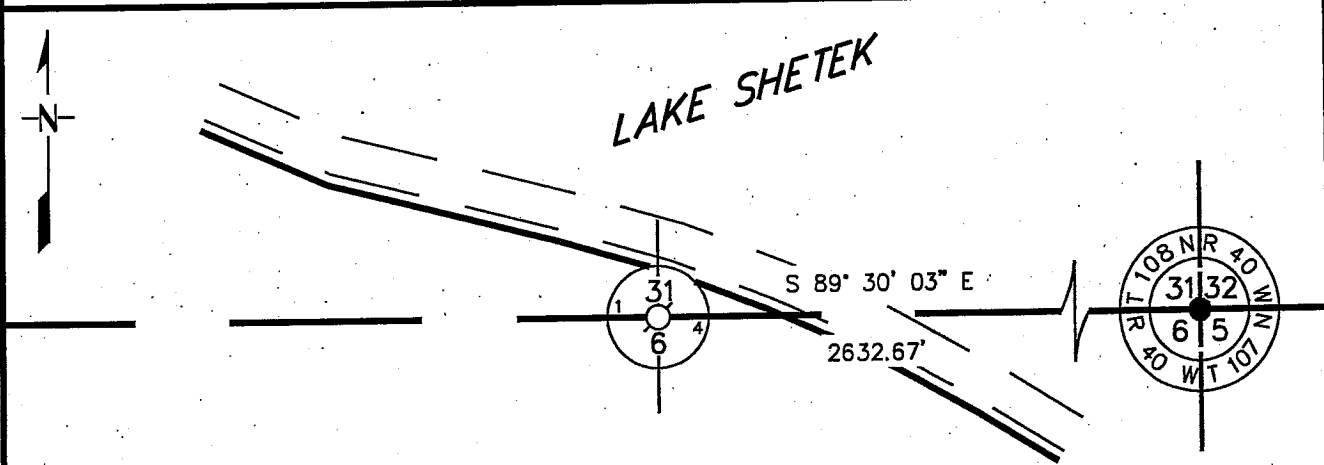
Index No. A-3

# CERTIFICATE OF LOCATION OF GOVERNMENT CORNER

NORTH QUARTER Corner of Section 6, Township 107 N, Range 40 W  
5th Principal Meridian, State of Minnesota, County of MURRAY

At the corner location shown on the sketch:

- On \_\_\_\_\_ found a \_\_\_\_\_  
DATE
- left monument as found,  lowered monument,  removed monument (explain)
- On 8/13/2008 Placed a 3/4" X 24" REBAR WITH PLASTIC CAP STAMPED  
DATE "MN DNR LS 17003". UP 0.4'



QUARTER CORNER  
MURRAY COUNTY  
COORDINATE SYSTEM  
NAD 1983 1996 ADJ.  
N = 195148.739  
E = 519194.109

NOTE: MONU IS  
ON STEEP LAKE BANK  
13' SOUTH OF WATER'S EDGE

BEARING IS COUNTY ORIENTATION  
GOOD TIES ARE NOT AVAILABLE

Statement of evidence for this corner location is on back of this page. 11/3/2008  
SPK00220.00.00.01

I certify that this document was researched and prepared by me or under my direct supervision.

SIGNATURE *Rene W. Shippel* DATE 10/14/09 License Number 17003

Title:  Land Surveyor  Professional Engineer  County Surveyor  County Engineer

North Quarter Corner of Section 6, Township 107 North, Range 40 West, Page 1 of 4

The DNR Division of Lands and Minerals contacted the following for survey information:

Minnesota Secretary of State's Office  
Murray County Recorder's Office  
Murray County Highway Engineer's Office  
Bueltel-Moseng Land Surveying of Marshall  
Zieske Land Surveying Inc. of Windom  
Madsen Land Surveying Inc. of Fairmont  
Pellinen Land Surveying of Hutchinson

1861 U.S. General Land Office notes, obtained from the Secretary of State's Office, show the corner marked with a wood post with the following bearing trees marked:

10" W. Oak, North 45° East, 23 links (15.18 feet)

10" W. Oak, South 30° East, 24 links (15.84 feet)

The corner is also shown:

40.00 chains (2640.00 feet) from the northeast corner of Section 6

38.92 chains (2568.72 feet) from the northwest corner of Section 6

No Surveyor's Record Book, obtained from the County Highway Engineer's Office,  
Date contains a survey in the Government Lots 3 and 4 of Section 6, which shows the quarter corner. A description of what kind of monument was found or set at the corner is not given. The corner is shown:

38.92 chains (2568.72 feet) from the northwest corner of Section 6

The following is noted:

"timber land on Lots 3 and 4 divided into lots as per plat to be filed in the Register of Deeds Office stake at corners and lines blazed"

1873 Plat B-18 in Government Lots 3 and 4 of Section 6, by B.M. Low, County Surveyor, obtained from the County Recorder's Office, shows the north line of Section 6 east of Meander Corner Number 4.

No information is given about the north quarter corner of Section 6.

1922 An enlarged Plat of Sublots in Government Lots 3 and 4, by E.G. Miner, Civil Engineer and Surveyor, obtained from the County Recorder's Office, shows the north line of Section 6 east of Meander Corner Number 4.

No information is given about the north quarter corner of Section 6.

North Quarter Corner of Section 6, Township 107 North, Range 40 West, Page 2 of 4

- 1935 A Property and Location Map for Lake Shetek Park Project by the State of Minnesota Emergency Relief Administration that shows Section 1, T107N, R41W and Section 6, T107N, R40W, in the possession of the DNR Division of Lands and Minerals, shows two points on the north line of Section 6 between the northwest corner of Section 6 and the north quarter corner of Section 6. The points are shown:
- a) 2339.0 feet east of the northwest corner of Section 6 (believe that 2339.0 feet is incorrect because the scaled distance on the map is 1339.0 feet)
  - b) 2632.7 feet east of the northwest corner of Section 6 (believe that 2632.7 feet is incorrect because the scaled distance on the map is 1632.7 feet)

No information is given about the quarter corner.

- 1936 December, pages in a field notebook by the National Park Service, in the possession of the DNR Division of Lands and Minerals, shows that a base line was measured easterly of the northeast corner of Section 2 and two 1 ½ inch galvanized pipes were set easterly of the area of the northwest corner of Section 6. The pipes are shown:
- a) 1943.44 feet east of the area of the northwest corner of Section 6
  - b) 2274.23 feet east of the area of the northwest corner of Section 6

No information is given about the quarter corner.

- 1936 A Survey Map by the National Park Service that shows Sections 5 and 6, T107N, R40W, Sections 1 and 2, T107N, R41W, and Sections 35 and 36, T108N, R41W, in the possession of the DNR Division of Lands and Minerals, shows that a base line was measured as follows:
- from a brass plug at the intersection of a north-south concrete pavement road and an east-west gravel road in the vicinity of the northwest corner of Section 2, Township 107 North, Range 41 West to the area of the northeast corner of Section 5, Township 107 North, Range 40 West

A spike, hub and rocks were set in the area of the corner and they are shown to be:

on the base line  
2640.0 feet from the northeast corner of Section 6  
2632.7 feet from the northwest corner of Section 6

Computations using stationing reveal the spike, hub and rocks are:

2640.60 feet from the northeast corner of Section 6  
2652.00 feet from the northwest corner of Section 6

The map has conflicting distances to section and quarter corners and appears that it's a preliminary survey because no boundary work is shown on it.

North Quarter Corner of Section 6, Township 107 North, Range 40 West, Page 3 of 4

- 1966 DNR Bureau of Engineering contracted N.C. Hoiium and Associates Inc. of Coon  
1967 Rapids, Minnesota, to survey property in Lake Shetek State Park. The DNR records of survey show that a traverse was run from the northwest corner of Section 1, Township 107 North, Range 41 West to the northeast corner of Section 5, Township 107 North, Range 40 West.

No information is given about the quarter corner.

Computations from the survey information reveal that monuments were set on the north line of Sections 5 and 6 as follows:

- 3088 feet west of the northeast corner of Section 5
- 4826 feet west of the northeast corner of Section 5
- 5541 feet west of the northeast corner of Section 5
- 5860 feet west of the northeast corner of Section 5

A Conservation Monument was set on the north line of Section 6 at a distance of:  
2170.70 feet east of the northwest corner of Section 6

- 1978 The plat of DIAMOND ROW in the Southeast Quarter of Section 31 by Willard Pellinen, LS 9626, obtained from the County Recorder's Office, shows an iron monument at the southeast corner of Section 31 (northeast corner of Section 6). Iron monuments are shown along the south line of Section 31 (north line of Section 6) at the following distances from the southeast corner of Section 31 (northeast corner of Section 6):  
202.29 feet, 225.98 feet, 572.96 feet, 594.00 feet, 1484.96 feet,  
1674.13 feet, 1699.81 feet

No information is given about the quarter corner.

- 1981 December, a hand written statement with Willard Pellinen's business card copied thereon, from McCombs- Knutson Associates, Inc. in the possession of the DNR Division of Lands and Minerals, does not give any details about the corner. An attached sketch shows the corner:  
2561.60 feet from the northwest corner of Section 6  
2632.68 feet from the northeast corner of Section 6

A description of what kind of monument, if any, was set at corner is not given.

North Quarter Corner of Section 6, Township 107 North, Range 40 West, Page 4 of 4

Analysis of the above information along with the information in the Certificate of Location of Government Corner for the northeast corner of Section 1 led the DNR Division of Lands and Minerals to conclude that:

- a) in 1936, the National Park Service established the north line of Section 6 incorrectly
- b) in 1966/1967, N.C. Hoium and Associates Inc. established the north line of Section 6 incorrectly
- c) in 1981, Willard Pellinen used the correct method to establish the north line of Section 6 but in doing so he used an incorrect location for the east quarter of Section 12 to compute the location of the northwest corner of Section 6

Monuments that were set along the north line of Section 6 in 1936 and 1966/1967 were not searched for because their locations were determined from incorrect locations for the northwest corner of Section 6 (northeast corner of Section 1).

The location of the quarter corner was computed lost and was found to be:

2632.67 feet from the northeast corner of Section 6

2651.59 feet from the northwest corner of Section 6

A field search was conducted at the computed lost position for the quarter corner for evidence of the GLO bearing trees but no evidence of them was found. Also, searched for three irons on the south line of DIAMOND ROW between Lake Shetek and Park Lake but did not find them.

Accept the computed lost position as the location of the corner. A  $\frac{3}{4}$  inch by 24 inch rebar with a plastic cap stamped "MN DNR LS 17003" was set to mark the location of the corner as shown on the sketch of reference ties.